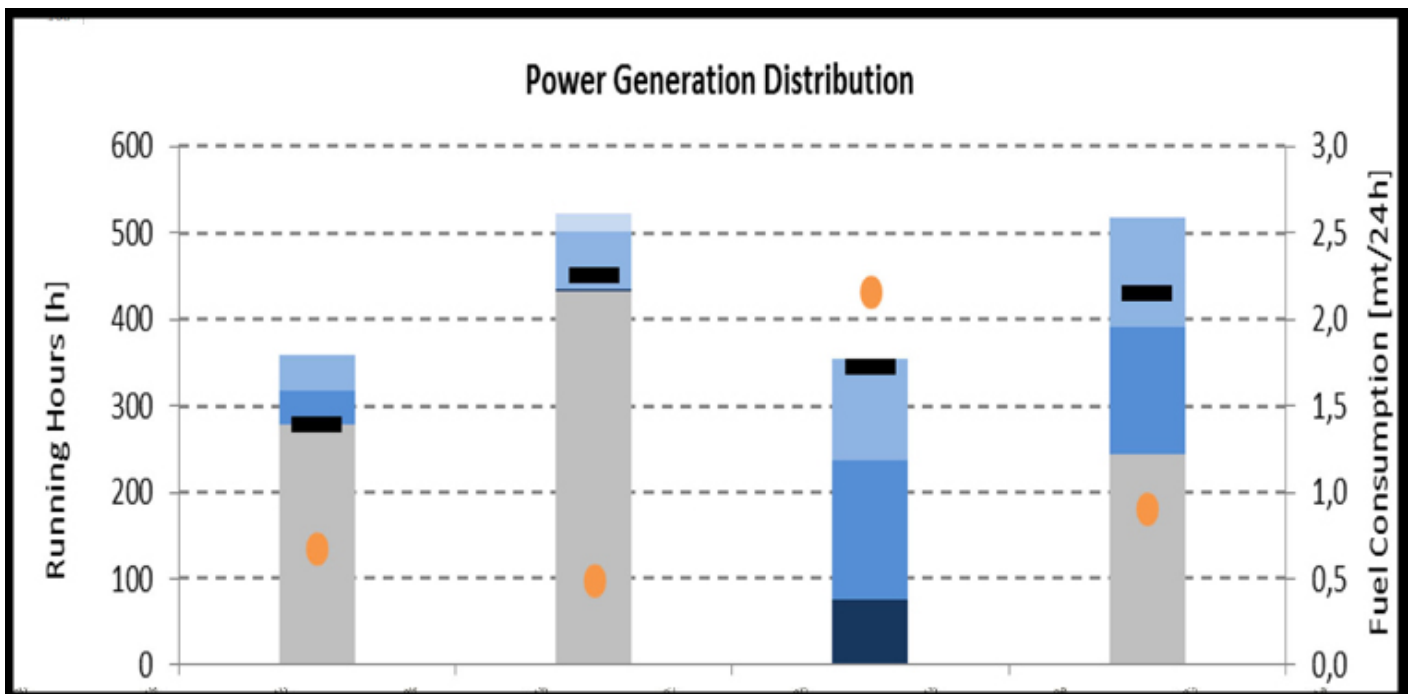


CASE: NEGATIVE SHAFT GENERATOR ACTIVITY

COACH provides the ship operator with voyage monitoring and analysis during and upon completion of the voyage.

In this case, monthly reporting revealed negative shaft generator activity. The monthly reports were able to give an in-depth analysis and overview of the vessel's performance throughout a longer period. COACH detected negative shaft generator activity on two individual vessels - activity that had not been reported to the ship operator.

COACH onboard reporting conducted a thorough analysis that underlined a significant excess HFO consumption. COACH was then able to conclude an exact overview of the additional fuel consumption which was again reported further to the ship operator.



The third column from the left shows the power generator distribution from one of the vessels in question. The diagram shows a clear indication of lacking generator activity, which was detected by COACH.